

MUN3C1XR6-SB EVB Guide

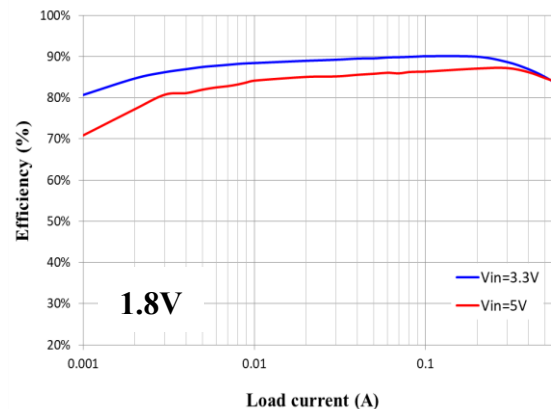
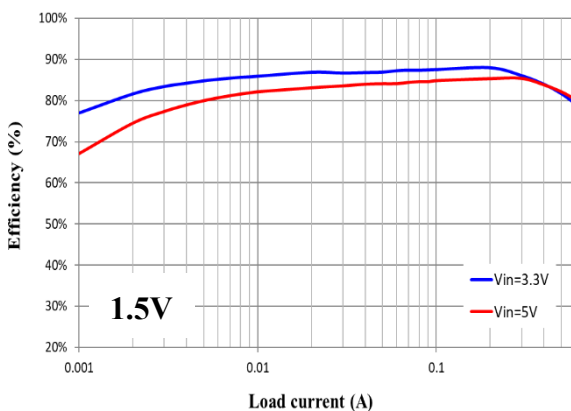
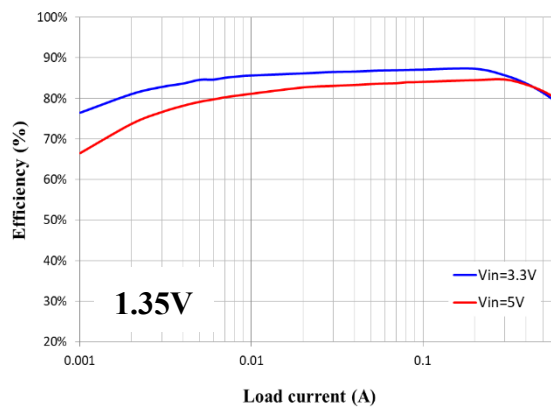
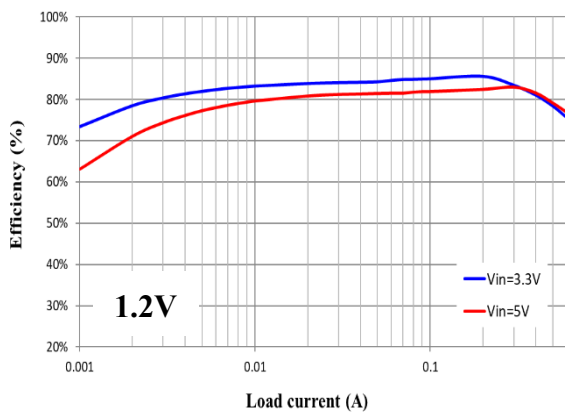
DESCRIPTION:

The MUN3C1XR6-SB power module series is non-isolated dc-dc converters that can deliver up to 600mA of output current.

ELECTRICAL SPECIFICATION:

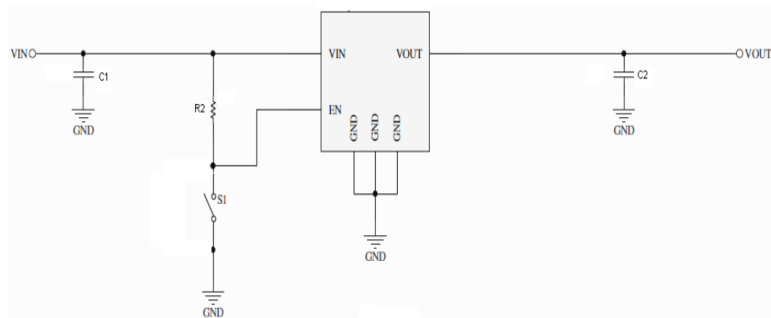
Parameters	Symbol	Value	Unit
Input Voltage Range	VIN	2.7~5.5	V
Output Voltage	VOUT	1.2/1.35/1.5/1.8	V
Output Current	IOUT	0.6	A

EFFICIENCY::



MUN3C1XR6-SB EVB Guide

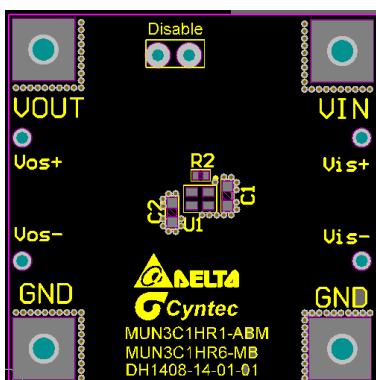
EVALUATION BOARD & SCHEMATIC:



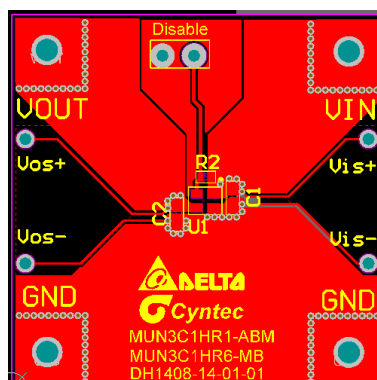
BILL OF MATERIALS:

Qty	Ref.	Value	Description	Vendor
1	C1	4.7uF/10V/X5R/0603	Ceramic Cap	Murata
1	C2	10uF/10V/X5R/0603	Ceramic Cap	Murata
1	R2	100k/0402	Chip Resistor	Cyntec
1	U1	MUN3C1BR6-SB/ MUN3C1DR6-SB/ MUN3C1ER6-SB/ MUN3C1HR6-SB		Cyntec

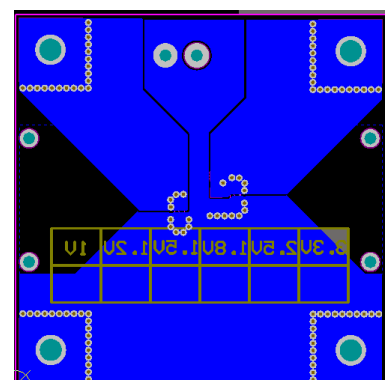
PRINTED CIRCUIT BOARD LAYOUT:



Top Component Side



Top Layer



Bottom Layer